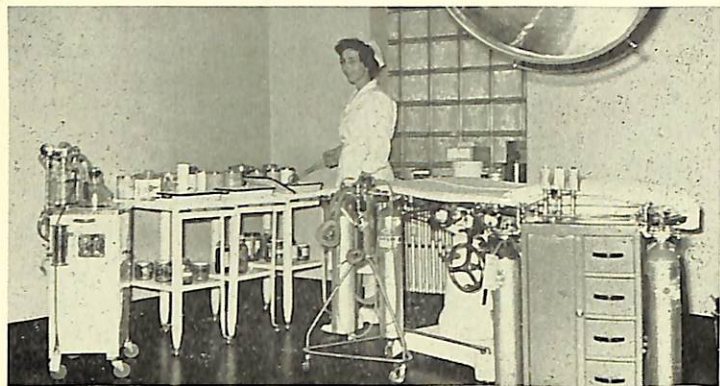


Hospital



Operating Room, Linn Hospital

The Alexander Linn Hospital, located within the Borough of Sussex, is a monument to the efforts of an alert and active citizenry of the borough and the surrounding townships. A healthy community is a happy and productive one, and Sussex is no exception in this regard.

Within the walls of the new section of Linn Hospital is located all of the most modern attributes of a first class hospital, including the finest equipment such as X-ray, laboratory, operating room, delivery room, nursery and kitchen. Attractive suites for new mothers are also part of the new wing.

The old section has been fully modernized and meets with the approval of the N. J. State Department of Institutions and agencies.

The nursing staff is of a high quality and serves both patient and doctor with the utmost in professional efficiency and standards.

The medical staff, composed of local physicians, is unequalled in this section of New Jersey. The staff stands ready to serve the community at any hour of the day or night. Doctors and nurses, trained and experienced in the many fields of the profession, have an enviable record behind them, and they assure vital health protection to all members of the family.

Linn Hospital is owned and operated on a non-profit basis by the citizens of the community.

Hotel and Accommodations

The Borough of Sussex has adequate facilities to cater to the needs of transient, vacation or permanent guests. Its four hotels have been in constant operation for many years and offer clean, considerate and courteous service. A number of tourist homes are also operated in the borough, and the outlying area contains many cabins, cottages and other tourist facilities.

Surrounding Areas

The area surrounding the Borough of Sussex is dotted by prosperous, well-kept farms. These are of all sizes and cover all phases of modern agriculture, although high-production dairying predominates.

Five miles to the north is the entrance to High Point Park — state maintained vacationland of 11,000 acres of virgin wilderness through which roads and trails give ready access to visitors. The park embraces the highest point in the state on which has been erected a 230-foot monument, dedicated to the soldiers and sailors of New Jersey. It is the largest monument of its kind in the United States. Ascending to its top, one enjoys a magnificent view of the mountain and valley panorama of three states.

In adjoining Wantage, Vernon and Montague townships are a large number of private camps for both children and adults.

Also nearby are the famed Appalachian Trail, Indian camp sites, and many more natural and man-made attractions.

Fire Department

The Sussex Fire Department had its origin in 1896. Originally composed of a hook and ladder and a hose company, they were combined to form the organization as it is known today.

Equipment includes an America La France fire-fighting machine with a 1,000 gallon pumper and booster tank; a G. I. pumper with 500 gallon capacity and booster tank, and an emergency truck with a portable pump and emergency lighting system.

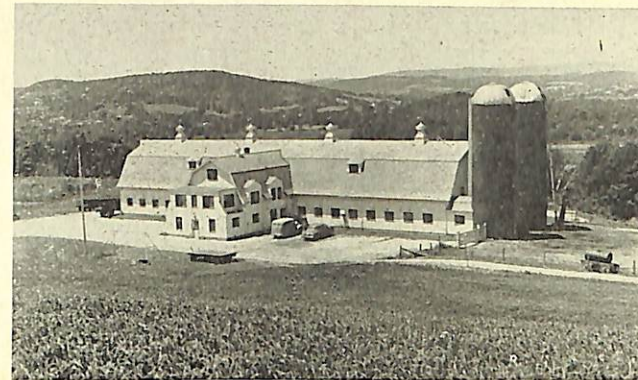
The fire department also maintains an active ambulance and first aid service which is available at any hour of the day or night; all on a voluntary and free basis. Its record is one with which to be proud.

The department is manned by 45 members, all of whom are qualified to render first aid.



Fire Fighting Equipment

An Invitation



Nearby Modern Dairy Farm

Sussex is a small, homey community. But although it does not expect to lose its individuality and become a bustling urban center, it does expect to continually expand and progress.

There is a need and a good opportunity for many more businesses to serve the rapidly growing area; there is a need and an opportunity for small, diversified industries to fit in with the stable economy of the community.

To the visitor we offer the scenic-land of the East; to the vacationer we offer congenial atmosphere, excellent facilities and an all-year play land; to all, we extend a cordial and hearty welcome.

Sussex Borough is

- 57 miles from New York City.
- 38 miles from Paterson.
- 48 miles from Newark.
- 21 miles from Middletown, N. Y.
- 14 miles from Port Jervis, N. Y.
- 14 miles from Newton.
- 40 miles from Morristown.
- 80 miles from Trenton.
- 39 miles from the Delaware Water Gap.

Further information on the Borough of Sussex may be obtained by writing to the
SUSSEX CHAMBER OF COMMERCE
Sussex, N. J.

This folder prepared by
SUSSEX CHAMBER OF COMMERCE
Edited by Ralph Decker Photos R. Kimble

BOROUGH OF

SUSSEX

SUSSEX COUNTY, NEW JERSEY

The Gateway To High Point



Soldiers and Sailors Monument, High Point

Sussex, N. J.

An active, hospitable, picturesque village among the foothills and lovely lakes of North Jersey.

Come up to Sussex when the pear trees bloom,
And the apple blossoms blow.
Come up to Sussex in lilac time,
Come when the harvests glow.

(Avery)

Settled in 1734
Incorporated in 1892

History



Main Street

The Borough of Sussex, like Rome of old with its seven hills, is situated among the rolling hills of Sussex County, often called the playground of New Jersey. This neat, little community is the gateway to high Point Park, about eight miles distant, a New Jersey State Park of 10,000 acres, with a monument of granite marking this highest point in New Jersey (1837 ft.).

Originally settled in the early half of the 18th century, it has slowly grown and developed its natural resources until it is the center of a prosperous and rich agricultural section. The borough, with its surrounding area, is rich in historical tradition. Nearby are evidences of Indian habitations.

In 1734 Peter Decker, the first pioneer white settler, came into the locality, and later started a settlement which was called Deckertown. The village grew and in 1892 was incorporated as the Borough of Deckertown. Its name, in 1902, was changed to the Borough of Sussex.

Sussex is the center of one of the richest dairy sections of the East. Its dairymen are progressive, having been aided in their work in Animal Husbandry, Breeding, Silage and Forage by experimental work carried on by the New Jersey Experiment Research Station only a few miles distant from the town.

The town itself and its surroundings are beautiful; this with its trade and business center, its good government, progressive schools, excellent churches, good health facilities and fine residences, make it a town of which its citizenry is proud, and one which continually attracts new citizens.

Churches

Fine churches of various denominations are located in Sussex. They offer a wealth of spiritual and social activities. Numerous clubs and organizations provide recreation for all age groups. Churches include First Baptist Church, Catholic, Christian Reformed, Methodist, Presbyterian, Wesleyan Methodist and Second Baptist Church.

Organizations

There are chapters of many well known national organizations in Sussex. The Kiwanis and Rotary Clubs are very active. There are well established American Legion and Veterans of Foreign War posts—and both have Auxiliaries. Other organizations include Masonic and Eastern Star Groups, Grange, Knights of Columbus, Sussex Garden Club, Parent-Teacher Association, Boy Scouts, Girl Scouts, 4-H Clubs and Future Farmers of America.

Recreation

The surrounding mountains and hills are dotted with lakes, and have many sparkling fresh, spring water brooks, all of which are stocked with trout and other game fish. Upland game hunters will find plenty of rabbits and pheasants, and deer are in abundance. This area is a mecca for hunters during the open season.

Clove Lake, in the borough, provides supervised swimming — and good fishing. Close to Sussex may be found trails for hiking. The famed Appalachian Indian trail skirts adjoining Wantage Township. A ski tow, ski trails and skating are enjoyed in the winter.

Sussex also has a fine movie theater, bowling center and other commercial amusement establishments.



Clove Lake Beach

Education



Sussex High School

Education has long been most important in Sussex. Private schools and academies were started in the town and in Wantage Township. A high school was established as soon as the law permitted. Sussex now has a modern high school with college, manual training, commercial, agricultural, home economics and general courses. The elementary school serves pupils from the kindergarten through the eighth grade.

Transportation

Sussex, 57 miles from New York City, is easily accessible from the metropolitan area. New Jersey State Highways 23 and 84 converge in Sussex. Daily bus service to New York and Paterson, N. J., is provided by the Inter City Bus Lines and the Northwest Coach Lines.

Although there is no railroad passenger service to Sussex, there is excellent rail freight service available through the New York, Susquehanna & Western Railroad and the Lehigh and New England Railroad.

Air travel and air freight service is available at Sussex Airport.

Industry

The prime industry of Sussex is catering to the needs of the flourishing dairy industry in the surrounding areas. Two creameries operate within the borough. Other agricultural industries include poultry and fruit and vegetable raising.

A number of small factories operate in the borough. These are either needlework plants or light manufacturing units.

There is a wealth of available factory labor in Sussex and in the surrounding communities. The Sussex Chamber of Commerce, seeking to promote new industrial expansion, will co-operate with any industry interested in locating in Sussex. Fine, utility-served factory sites are available through the Chamber's facilities.

Utilities

The water system in the Borough of Sussex is municipally owned and operated. An abundant supply of pure, soft, mountain water is piped to all homeowners, businesses and industries at a very nominal rate. The reservoir is located in High Point Park.

Most of the homes in the borough are connected to a central, borough-owned sewer system.

Electricity is supplied by the New Jersey Power and Light Company. A sub-station is located in the borough, and power in unlimited quantities is available for home, store, farm or industry.

Telephone service is available through the Farmers Union Telephone Company, which is located in the borough. Its telephone lines spread out through Wantage, Hardyston and Vernon Townships, and into the adjoining area in New York State. Long distance service is immediately available through connections to the Sussex Telephone Company and the Bell systems.

Government

The Borough of Sussex is governed by a mayor and six councilmen — with two councilmen being elected each year for three-year terms. The mayor serves for two years, and has supervisory jurisdiction over the municipal departments.

The health of the community is guarded by an active Board of Health. Periodic water tests are made by a borough chemist.

The police department consists of a chief and a patrolman, with a number of special police designated to aid when needed. Traffic and criminal cases are heard in a local magistrate's court.



Borough Hall